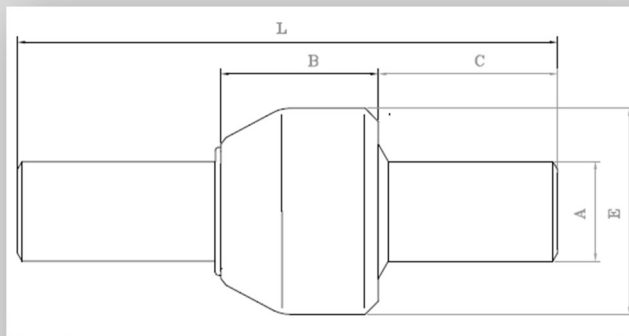


MONOLITHIC INSULATING JOINTS Class 600 specification

Design temperature	Electrical insulation resistance in dry air	Dielectric resistance in dry air	Design Pressure	Test Pressure
-10°C+70°C	≥100 Mohm	3.5 KV	100 kg/cm ²	150kg/cm ²




- Pipe Steel Material: Steel API 5L/EN 10208-2 or equivalent
- Central body steel material: Steel EN 10297-1 E355 or equivalent
- Ends to be welded : API 5L/EN 10208-2
- Bevel = 30° +5/-0°

Product code	ND	A	E	C	B	L	Weight (in Kg)
P015100	1/2"	21,3	60	97	56	250	1,4
P020100	3/4"	26,7	65	96	60	250	1,5
P025100	1"	33,4	68	93	64	250	1,7
P032100	1" 1/4	42,2	82	115	70	300	2,6
P040100	1" 1/2	48,3	94	113	74	300	3,5
P050100	2"	60,3	108	135	80	350	5
P065100	2" 1/2	76,1	127	130	90	400	8
P080100	3"	88,9	152	200	100	500	13
P100100	4"	114,3	176	190	120	500	19
P125100	5"	141,3	217	230	148	600	29
P150100	6"	168,3	248	222	161	600	42
P200100	8"	219,1	297	215	183	600	62
P250100	10"	273,0	340	266	168	700	78
P300100	12"	323,8	388	258	184	700	94

NB: The dimensions reported in the table are in millimeters (mm)

Certificates issued: EN 10204 3.1 and CE compliance

 	INSULATION JOINT II 2 GD Zone 1 e 21 d T5 Technical file: A02-MS	
	Technical File : A02-MS	Anno: 2014