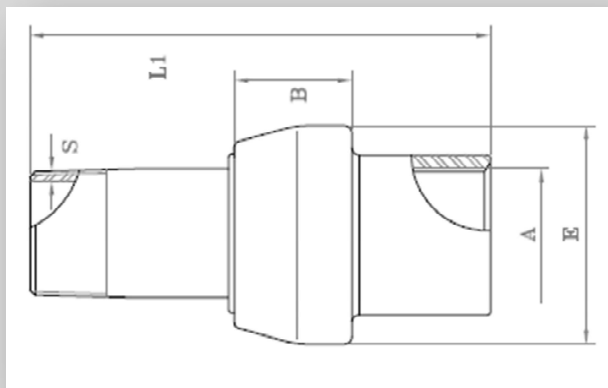


MONOLITHIC INSULATING JOINTS Class PN10 specification

Working Temperature	Electric insulation	Dielectric resistance	Testing pressure	Working pressure
-10°C+70°C	10 Mohm	3.0 KV	15kg/cm ²	10kg/cm ²

MF-Male Female



- Hot forged socket: ASTM A 105 or equivalent
- Hot forged spigot: API 5L gr.B or equivalent
- Insulating ring in polycarbonate
- Gasket ring in Hytrel 40 D Dupont
- Epoxyphenolic painting
- Threads ends: ISO7/EN10226-1
- Manufactured and tested in accordance to UNI CIG 10284

Product Code	ND	A	E	B	L1	Weight (in Kg)
MF015	1/2"	21,3	46	28	100	0,4
MF020	3/4"	26,7	53	30	110	0,5
MF025	1"	33,4	60	32	120	0,7
MF032	1" 1/4	42,2	71	35	135	1,0
MF040	1" 1/2	48,3	77	37	145	1,2
MF050	2"	60,3	90	38	150	1,7
MF065	2"1/2	76,1	113	53	170	3,0
MF080	3"	88,9	127	53	200	4,0
MF100	4"	114,3	156	65	220	6,5

NB: The dimensions reported in the table are in millimeters (mM)

Certificates issued: EN 10204 3.1 and CE compliance

 	INSULATION JOINT II 3 GD Zone Ex T6 Technical file: A02-MS	
	Technical File : A02-MS	Anno: 2021