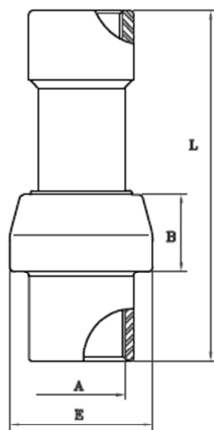


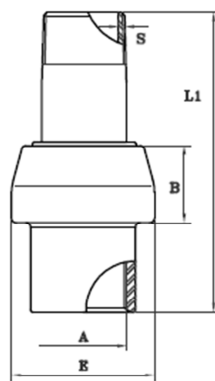
MONOLITHIC INSULATING JOINTS Class PN10 specification

Design temperature	Electric Insulation resistance in dry air	Dielectric resistance in dry air	Test pressure	Design pressure
-10°C+70°C	10 Mohm	3.0 KV	15kg/cm ²	10kg/cm ²

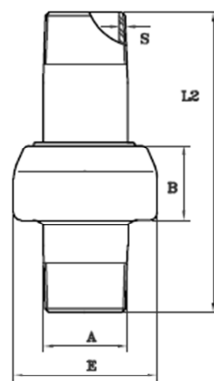


FF-FEMALE FEMALE

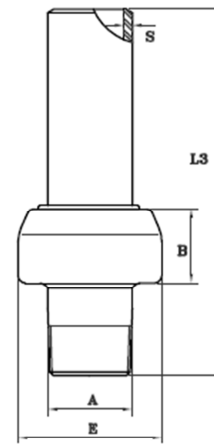
teel



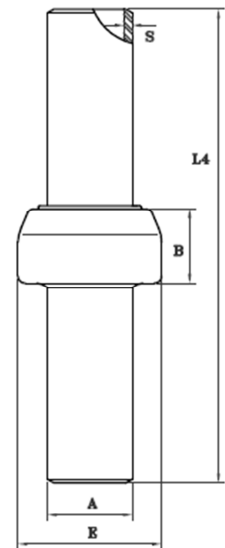
MF-MALE FEMALE (STM)



MM-MALE MALE



MS-MALE WELD



WW-WELD/WELD

- Ends to be welded : API 5L/EN 10208-2 or equivalent
- Thread ends: ISO7/EN10226-1

ND	A	E	B	L	L1	L2	L3	L4
1/2"	21,3	46	28	135	100	110	155	210
3/4"	26,7	53	30	142	110	125	170	225
1"	33,4	60	32	170	120	137	183	245
1" 1/4	42,2	71	35	175	135	154	203	270
1" 1/2	48,3	77	37	180	145	168	215	280
2"	60,3	90	38	-	150	170	225	290
2" 1/2	76,1	113	53	-	170	194	255	330
3"	88,9	127	56	-	200	230	300	400
4"	114,3	156	65	-	220	260	330	-

NB: The dimensions reported in the table are in millimeters (mM)

Certificates issued: EN 10204 3.1 and CE compliance

 	INSULATION JOINT II 2 GD Zone 1 e 21 d T5 Technical file: A02-MS	
	Technical File : A02-MS	Anno: 2014